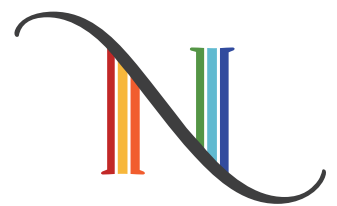




TIFFANY'S
**Gardens
in Glass**

An exhibition organized by



the neustadt
EXPERIENCE TIFFANY GLASS



This gem of an exhibition illuminates the path from inspiration to expression by presenting a selection of Tiffany Studios' nature study photographs along with the lush botanical lamps and windows that made the Studios famous.

Peony Library Lamp, GL.10; Peonies, archival photograph from the former collection of Agnes Northrop and Tiffany Studios, Courtesy of Christie's, New York

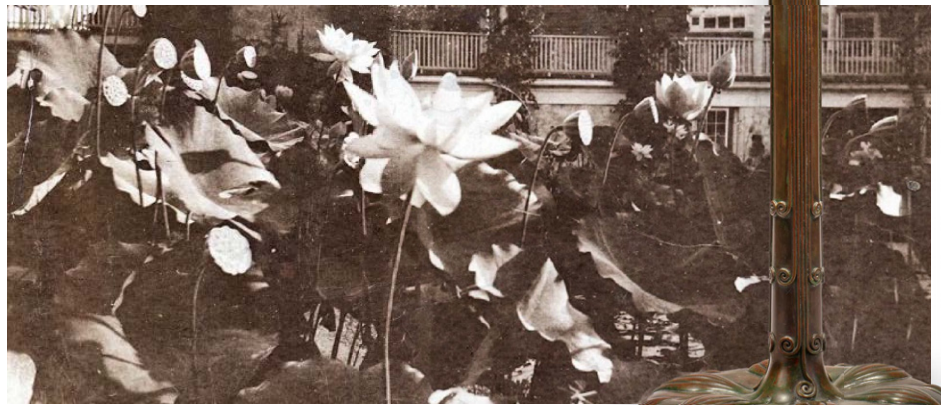


Explore Tiffany's passionate and enduring interest in nature through this dynamic, focus-exhibition of 10 works in glass and 9 photographs.

Louis C. Tiffany's tireless exploration of glass as a creative medium and his enduring love of nature's beauty prevailed in his visionary artistic approach.

He staffed his Studios with designers, artists, and artisans who shared his passion for the rich colors and sinuous forms found in nature. Their skill, along with the vast range of colors and effects available to them, made it possible for Tiffany Studios to translate natural forms faithfully into glass: velvety or paper-thin petals, waxy or veined leaves, dappled sunlight or shadow, and much more.

Perpetually in bloom, Tiffany's floral lamps and landscape windows embody his Studios' hallmark sophisticated design and exquisite craftsmanship.



Grape Vine and Lemon Tree with Trellis window, W.15; *Pond Lily Library Lamp*, C.08; *Lotus Flowers*, archival photograph from the Tiffany Studios Study Photograph Collection, Courtesy of Private Collection

EXHIBITION SPECIFICATIONS

NUMBER OF WORKS	10 Tiffany Studios objects total: 6 lamps, 1 lamp screen, 3 windows 9 framed reproductions of Tiffany Studios Nature Study photographs
REQUIREMENTS	Moderate to high security Approximately 1,500 square feet Standard temperature, humidity and light controls in exhibition space
PARTICIPATION FEE	Please inquire.
SHIPPING	Organized by The Neustadt. Exhibitor is responsible for round trip or pro-rated shipping to be determined as bookings are finalized.
BOOKING PERIOD	12 weeks Longer periods are available upon request; additional weeks are pro-rated
TOUR	Available through Winter 2028 <i>Current bookings</i> Springfield Museums, Springfield, MA (Oct. 5, 2024–Feb. 3, 2025) Allentown Art Museum, Allentown, PA (Apr. 25–June 29, 2025) Oshkosh Public Museum, Oshkosh, WI (July 19, 2025–Jan. 3, 2026) Cahoon Museum of American Art, Cotuit, MA (Mar. 15–June 7, 2026) Zanesville Museum of Art, Zanesville, OH (Oct. 22, 2026–Jan. 9, 2027) Southern Vermont Arts Center, Manchester, VT (June 19–Sept. 12, 2026)
SUPPORT MATERIAL	Included: display cases and light boxes; light bulbs; exhibition interpretation and installation guide; printed and mounted object labels; printed and framed reproduction photographs; designed, printable wall panel files. Merchandise is available at additional cost.
CURATED BY	Lindsay R. Parrott Executive Director and Curator, The Neustadt Collection of Tiffany Glass Alexandra M. Ruggiero Consulting Curator and former Curator of Modern Glass, The Corning Museum of Glass
CONTACT	Online: theneustadt.org/exhibitions/road Email: lparrott@theneustadt.org

Unless otherwise noted, objects shown in this document are property of The Neustadt Collection of Tiffany Glass and were created by Tiffany Studios in New York sometime between 1902 and 1915, under the artistic direction of Louis C. Tiffany (1848–1933). Glass, cut and assembled; cast bronze hardware. Please see object checklist for additional information.

Object photography by David Schlegel.

FRONT *Poppy* Library Lamp, C.05; *Moth* Lamp Screen, 2006.12
BACK *Daffodil* Library Lamp, C.12

