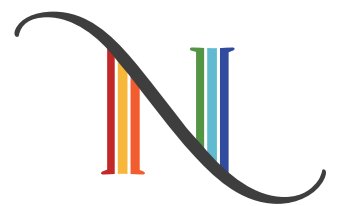




TIFFANY'S  
**Gardens  
in Glass**

An exhibition organized by



the neustadt  
EXPERIENCE TIFFANY GLASS



---

**This gem of an exhibition illuminates the path from inspiration to expression by presenting a selection of Tiffany Studios' nature study photographs along with the lush botanical lamps and windows that made the Studios famous.**

---

*Peony Library Lamp, GL.10; Peonies, archival photograph from the former collection of Agnes Northrop and Tiffany Studios, Courtesy of Christie's, New York*



---

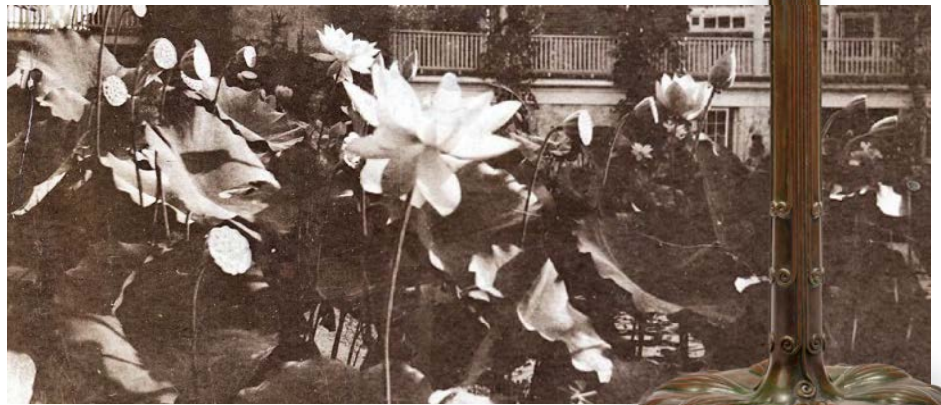
Explore Tiffany's passionate and enduring interest in nature through this dynamic, focus-exhibition of 10 works in glass and 9 photographs.

---

Louis C. Tiffany's tireless exploration of glass as a creative medium and his enduring love of nature's beauty prevailed in his visionary artistic approach.

He staffed his Studios with designers, artists, and artisans who shared his passion for the rich colors and sinuous forms found in nature. Their skill, along with the vast range of colors and effects available to them, made it possible for Tiffany Studios to translate natural forms faithfully into glass: velvety or paper-thin petals, waxy or veined leaves, dappled sunlight or shadow, and much more.

Perpetually in bloom, Tiffany's floral lamps and landscape windows embody his Studios' hallmark sophisticated design and exquisite craftsmanship.



Grape Vine and Lemon Tree with Trellis window, W.15; *Pond Lily* Library Lamp, C.08; *Lotus Flowers*, archival photograph from the Tiffany Studios Study Photograph Collection, Courtesy of Private Collection

## EXHIBITION SPECIFICATIONS

<b>NUMBER OF WORKS</b>	10 Tiffany Studios objects total: 6 lamps, 1 lamp screen, 3 windows 9 framed reproductions of Tiffany Studios Nature Study photographs
<b>REQUIREMENTS</b>	Moderate to high security Approximately 1,500 square feet Standard temperature, humidity and light controls in exhibition space
<b>PARTICIPATION FEE</b>	Please inquire.
<b>SHIPPING</b>	Organized by The Neustadt. Exhibitor is responsible for round trip or pro-rated shipping to be determined as bookings are finalized.
<b>BOOKING PERIOD</b>	12 weeks Longer periods are available upon request; additional weeks are pro-rated
<b>TOUR</b>	2024 - 2028
<b>SUPPORT MATERIAL</b>	Included: display cases and light boxes; light bulbs; exhibition interpretation and installation guide; printed and mounted object labels; printed and framed reproduction photographs; designed, printable wall panel files. Merchandise is available at additional cost.
<b>CURATED BY</b>	<b>Lindsay R. Parrott</b> Executive Director and Curator, The Neustadt Collection of Tiffany Glass  <b>Alexandra M. Ruggiero</b> Consulting Curator and former Curator of Modern Glass, The Corning Museum of Glass

**CONTACT** Online: [theneustadt.org/exhibitions/road](https://theneustadt.org/exhibitions/road)  
Email: [lparrott@theneustadt.org](mailto:lparrott@theneustadt.org)



Unless otherwise noted, objects shown in this document are property of The Neustadt Collection of Tiffany Glass and were created by Tiffany Studios in New York sometime between 1902 and 1915, under the artistic direction of Louis C. Tiffany (1848–1933). Glass, cut and assembled; cast bronze hardware. Please see object checklist for additional information.

Object photography by David Schlegel.

FRONT *Poppy* Library Lamp, C.05; *Moth* Lamp Screen, 2006.12  
BACK *Daffodil* Library Lamp, C.12

